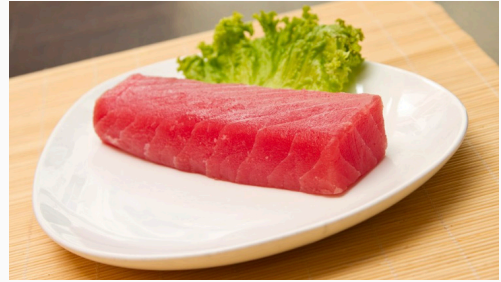




Shore Mariner - Tuna Saku AA

These excellent quality, taste and texture ‘Sashimi’ Tuna is a massive hit for Japanese restaurants.



- * Ready to Eat – Just Slice and Serve!
- * Wild Caught

Ideal for:
Shops, Cafes, restaurants, Takeaway, QSR, clubs, hotels.

Certifications:
HACCP Certified.

Product Information

Product	Species	Units/Carton
Tuna Saku AA	<i>Thunnus albacares</i>	5kg Bulk

Nutrition Information

Servings per pack: 50
Serving size: 100g

	Avg Qty per serving	Avg Qty per 100g
Energy	518kj	518kj
Protein	24.0g	24.0g
Fat -Total	0.4g	0.4g
-Saturated	0.4g	0.4g
Carbohydrate	0.0g	0.0g
Sugars	0.0g	0.0g
Sodium	27mg	27mg

Ingredients: Tuna (99%) (Fish), Antioxidant (300, 301), Mineral salt (331), Beet Juice Powder, Salt, Natural Flavouring.
Contains Fish

Cooking Instructions

Method 1 (Preferred preparation method)

Place Tuna Saku bag in refrigerator and thaw overnight. Remove Tuna Saku from the sealed bag after it has half thawed. Wrap Tuna Saku in paper towel for 30 minutes to remove any excess moisture. Remove Tuna Saku from paper towel and cut with a sharp knife.

Storage: Keep frozen at or below -18°C

Frozen Shelf Life: 2 Years from production

Chilled Shelf Life: Consume within 5 days

Product of Indonesia





Shore Mariner - Tuna Saku AA

Packaging

Packaging Configuration **5kg (Bulk)**

Inner:



Packaging Type: Individually Vacuum-Packed in Printed Bags

Outer:

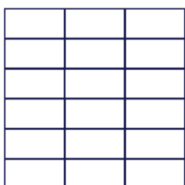


Packaging Type: Cardboard Carton

Dimensions: 360mm(L) x 250mm(W) x 130mm(H)

Product Code	Sizing
TSKU2503ID	250/300g
TSKU3504ID	350/400g

Pallet Configuration



18U1
18 Cartons per layer
7 Layers per pallet
126 Cartons per pallet