



Shore Mariner - Scallops Roe On

Our selection of roe-off scallops are tender and juicy. Ideal to add to your menu as an exclusive seafood offering.

- * Wild Caught in the North Western Pacific Ocean
- * Individually Quick Frozen
- * Good Source of Protein



Ideal for:

Cafes, restaurants, QSR, clubs, hotels, catering, hospitals, canteens and institutions.

Certifications:

HACCP Certified.

Product Information

Product	Piece Size	Units/Carton
Shore Mariner Scallops Roe On	Approx 100g	10 x 1kg (10kg)

Nutrition Information

Servings per pack: 10
 Serving size: 100g

	Avg Qty per serving	Avg Qty per 100g
Energy	233 kJ	233 kJ
Protein	11.6 g	11.6 g
Fat -Total	0.7 g	0.7 g
-Saturated	0.2 g	0.2 g
Carbohydrate	0.6 g	0.6 g
Sugars	0.1 g	0.1 g
Sodium	163 mg	163 mg

Ingredients: Scallops (99%), Water, Mineral Salt (451, 452)
 Allergens: Contains Fish (Molluscs)

Cooking Instructions Cook Before Consumption

Method 1 (Preferred preparation method)

Cover and refrigerate for 8 to 10 hours. Once thawed, rinse under cold running water and drain for approximately 1 to 2 minutes.

This product is raw and must be fully cooked prior to consumption.

Storage: Keep frozen at or below -18°C

Frozen Shelf Life: 2 Years from production

Chilled Shelf Life: Consume within 5 days



Product of China

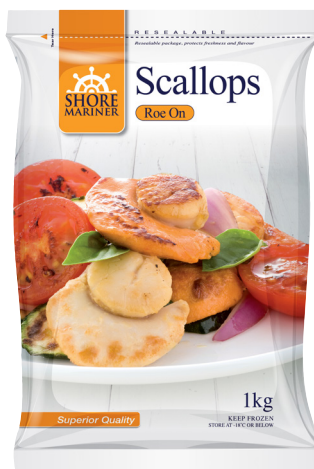


Shore Mariner - Scallops Roe On

Packaging

Packaging Configuration **10 x 1kg (10kg Bulk)**

Inner:



Packaging Type: Printed Food Grade Plastic Bag

Outer:

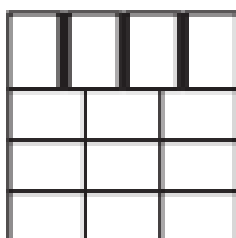


Packaging Type: Cardboard Carton

Dimensions: 375mm x 280mm x 200mm

Product Code	Sizing	Inner Barcode	Outer Barcode
SCRO2030CH/CG/CP	20/30	9310389009664	19310389009661
SCRO3040CH/CG/CP	30/40	9310389009671	19310389009678
SCRO4060CH/CG/CP	40/60	9310389033874	19310389033871

Pallet Configuration



13B1
 13 Cartons per layer
 4 Layers per pallet
 52 Cartons per pallet