



# Shore Mariner - Vannamei Sushi Ebi (4L/5L/6L)

Our peeled, deveined and butterfly shaped shrimp is the ideal sushi topping.

- \* Ready to Eat - Just Thaw and Serve
- \* Peeled & Deveined
- \* Low Fat

Ideal for:  
Shops, Cafes, Restaurants, Takeaway, Hotels



Certifications:  
HACCP Certified.

## Product Information

Product	Pieces Per Pack
All sizes	30 pieces / Tray

## Nutrition Information

	Avg Qty per 100g
Energy	343kJ
Protein	18.5g
Fat -Total	0.9g
-Saturated	0.0g
Carbohydrate	0.0g
Sugars	0.0g
Sodium	478mg

Ingredients: Prawns (*Litopenaeus vannamei*) (99%), Salt  
Allergens: Contains Crustacea

## Cooking Instructions

Method 1 (Preferred preparation method)

Cover and refrigerate for 8 to 10 hours. Once thawed, rinse under cold running water and drain for approximately 1 to 2 minutes. Product is fully cooked and ready to serve.

Storage: Keep frozen at or below -18°C

Frozen Shelf Life: 2 Years from production

Chilled Shelf Life: Consume within 5 days

Product of Thailand



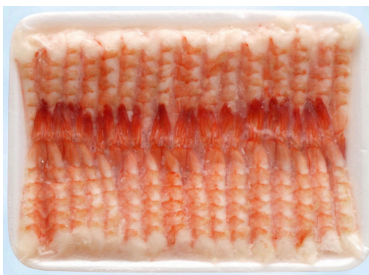


# Shore Mariner - Vannamei Sushi Ebi (4L/5L/6L)

## Packaging

Inner:

Outer:



**Cooked Sushi Markwell**  
(Frozen Peeled and Cooked Shrimp)

Production Date : 25mm

Best Before : 25mm

Keep frozen at -18°C or below. Do not refreeze after defrosted.

**INGREDIENTS:**  
Shrimp 99 % , Salt

**Product of Thailand**

Packed for:  
**Markwell Foods**  
Level 7, Suite 701, 28 Clarke St  
St Leonards NSW 2065, AUSTRALIA

NUTRITION INFORMATION	
Per 100g (approx) or per 30 PCS	
Energy	1400 kJ
Total Fat	0.5g
Total Protein	21.0g
Total Carbohydrate	0.1g
Sodium	0.0g
Sugar	0.0g
Fiber	0.0g

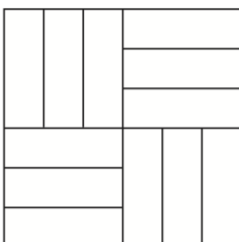


Packaging Type: Tray with Sticker Label

Packaging Type: Cardboard Carton

Product Code	Inner Barcode	Outer Barcode	Carton Dimension	Units Per Carton
SEVN004LTH	9310389031481	19310389031488	468mm(L) x 223mm(W) x 225mm(H)	30 x 200g Trays (6kg)
SEVN005LTH	9310389031498	19310389031495	468mm(L) x 223mm(W) x 265mm(H)	30 x 220g Trays (6.6kg)
SEVN006LTH	9310389031504	19310389031501	468mm(L) x 223mm(W) x 265mm(H)	30 x 280g Trays (8.4kg)

### Pallet Configuration



12S1  
12 Cartons per layer  
4 Layers per pallet  
48 Cartons per pallet